

REGISTRATION FORM

Please Print (One per person—copies accepted)

Name: _____

Address: _____

Phone _____

Email _____

Early Registration—by May 16, 2008

Professional _____ (\$125) One day _____ (\$65)

Student _____ (\$35)

Parent _____ (\$25)

Thurs. Lunch _____ (\$8.50)

**Group Registration _____

Group Registration (from same facility)- 10% discount (\$112.50)

per person for **three to nine** persons; 15% discount (\$106.25)

per person for **ten** or more persons - *Note*. All registration forms must be submitted together.

Onsite Registration only after May 16- \$140

Please make checks payable to:

ASU NSSLHA

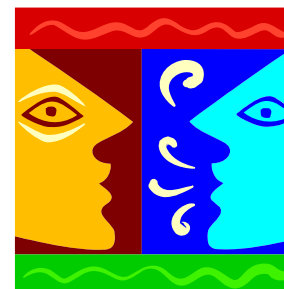
P.O. Box 910, State University, AR 72467

Please visit our website for more information

www.conhp.astate.edu/communicationdisorders/conference.htm

CANCELLATION POLICY

A full refund will be available before May 16 by making a request to Arkansas State University Communication Disorders Program by mail, fax, or email. After that date a refund minus \$25 will be given with notification of cancellation. No refunds will be available after June 1. All refund payments will be made after the conference. For more information contact Sherri Lovelace, slovelace@astate.edu or (870) 972-3106.



CONTINUING EDUCATION

Arkansas State University Communication Disorders Program is approved by the Continuing Education Board of the American Speech-Language-Hearing Association to provide continuing education activities in Speech-Language Pathology. One contact hour is equivalent to 0.1 ASHA CEUs. ASHA CE Provider approval does not imply endorsement of course content, specific procedures, or clinical procedures. This program is offered for a maximum of 1.3 CEUs (various levels).





Arkansas State University
Communication Disorders
Program Presents

**The 2nd Annual
JANE H. LEBLANC
CONFERENCE IN
COMMUNICATION DISORDERS**

ARKANSAS STATE UNIVERSITY
STUDENT UNION
CENTENNIAL HALL
JONESBORO, ARKANSAS

JUNE 5-6, 2008

ASU Communication Disorders Program
P.O. Box 910
State University, AR 72467

THURSDAY JUNE 5, 2008

Short Course 1 8:30-11:45 (3.0 CPE, .3 CEU)
The Development of Physiologic Voice Therapies: Supportive Documentation & Current Treatment Trends. *Joseph Stemple, PhD, CCC-SLP Univ. of Kentucky.* This course will provide an overview of the various voice therapy orientations and rationales for treatment selection. Explanation of when, why, and how to directly apply Vocal Function Exercises and Resonant Voice for specific disorders is provided.

Technical Session 1 12:15-12:45 (.5 CPE, .05 CEU)
Behind the Eyes of a Dummy: Growing Up Dyslexic (Luncheon Speaker)- *Lee Caskey & Susan Myscka, MD.* This presentation will explain the early signs of Dyslexia and how clinicians can assist with accurate diagnosis.

Technical Session 2 1:00-1:30 (.5 CPE, .05 CEU)
Efficacy of a Dysphagia Assessment Tool for Nurses- *Carrie A. Herstam & Dr. Steven J. Cloud, PhD, CCC-SLP, University of Southern Mississippi.* This presentation will discuss how use of the Dysphagia Decision Tree by nursing staff correlates with the bedside swallowing examination.

Mini Seminar 1 1:30-3:00 (1.5 CPE, .15 CEU)
Teaching Verbal Behaviors to Children with Severe Communication Delays *Sara Tinsley, MSP, CCC-SLP & Christie Wilkes, BS TLC.* This presentation will explain how to use specific strategies within natural and structured teaching sessions for vocal and non-vocal children with language delays.

Mini Seminar 2 1:30-3:00 (1.5 CPE, .15 CEU)
Oral Motor Techniques for Articulation Therapy - *E. Paul Milam, MCD, CCC-SLP Therapy Solutions.* This presentation will provide clinicians with different oral motor therapy tools for use in articulation therapy to assist with the acquisition and remediation of specific, targeted speech sounds.

Mini Seminar 3 3:00-4:30 (1.5 CPE, .15 CEU)
Candidacy and Counseling of Implantable Devices *Lisa Christensen, Au.D. & Jordan King, Au.D., Arkansas Children's Hospital.* This presentation will address candidacy and counseling issues involved in cochlear implant and Baha cases. Intervention strategies and creative ways to apply EBP while working with multidisciplinary teams will be discussed.

FRIDAY JUNE 6, 2008

Short Course 2 8:30-11:45 (3.0 CPE, .3 CEU)
Enhancing Phonological and Metaphonological Skills of Children with Highly Unintelligible Speech: An Update *Barbara W. Hodson, PhD, CCC-SLP Wichita State University.* This course focuses on children with severely impaired phonological systems, including those with Apraxia. Information regarding methods for expediting intelligibility gains and information in assessing and enhancing metaphonological skills is provided

Mini Seminar 4 1:30-3:00 (1.5 CPE, .15 CEU)
Social Cognitive Deficits in Children with Autism Spectrum Disorders and Effective Treatments *Dayna Miller, MCD, CCC-SLP NEA Children's Therapies & Therapy Solutions.* This presentation will provide attendees with strategies for identifying social cognitive deficits in children with ASD using the ILAUGH model.

Mini Seminar 5 1:30-3:00 (1.5 CPE, .15 CEU)
Right? Wrong? Unsure? Laying a Foundation for Ethical Decision Making. *Terry Baggs, PhD, CCC-SLP Abilene Christian University.* This presentation will explain how to utilize a decision making model to assist in daily clinical decisions regarding ethics. Ethics-related scenarios will be used to describe and highlight the different perspectives that shape ethical decision making.

Mini Seminar 6 3:00-4:30 (1.5 CPE, .15 CEU)
Using sensory Integration Theory in Speech-Language Sessions *Julie Adkins, MS, CCC-SLP NEA Children's Therapies.* This presentation will describe how to recognize sensory integration dysfunction in children and ways in which to design and use sensory integration techniques in therapy sessions.



INVITED PRESENTERS of SHORT COURSES

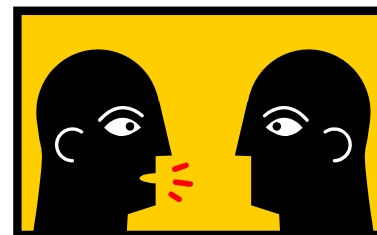
Barbara W. Hodson, PhD, CCC-SLP, and Board Recognized Specialist in Child Language, is the author of English and Spanish phonological assessment instruments and the developer of a computer software program, the Hodson Computerized Analysis of Phonological Patterns (3rd ed.; 2003). Her other major publications include: *Evaluating and Enhancing Children's Phonological Systems: Research and Theory to Practice* (2007); *Targeting Intelligible Speech: A Phonological Approach to Remediation—2nd ed.* (1991, with E. Paden); *Perspectives in Applied Phonology* (1997, with M.L. Edwards); and a *Topics in Language Disorders* Theme issue, *From Phonology to Metaphonology* (1994). In addition, she has published a number of textbook chapters and numerous research articles in scholarly national and international journals and has given several hundred Clinical Phonology presentations nationally and internationally.

Joseph Stemple, PhD, CCC-SLP received his doctorate in Communication Disorders from the University of Cincinnati in 1977. Before his tenure at the University of Kentucky in 2005, he served as Director of the Blaine Block Institute for Voice Analysis and Rehabilitation located in Dayton and Cincinnati, Ohio. Dr. Stemple is the author of the texts *Voice Therapy: Clinical Studies* (2nd ed.) and *Clinical Voice Pathology: Theory and Management* (3rd ed.) (Delmar-Thomson Learning, 2000) as well as research articles and text chapters related to clinical voice disorders. An active speaker and lecturer, Dr. Stemple also holds adjunct faculty status with Miami University of Ohio, and the University of Cincinnati. He is a Fellow of the American Speech-Language-Hearing Association.

PARKING & REGISTRATION

The Student Union is located in the center of the ASU campus on Caraway Road. It is adjoined to the parking garage for easy access to the conference location. Please park in any **non-reserved** space and obtain a parking permit at the registration table. The permit must be displayed on your rearview mirror to avoid ticketing by the University police.

Centennial Hall is located on the 3rd floor of the Student Union. Entrance to the Union is located on the southwest corner of the parking garage.



HOTEL INFORMATION

We have negotiated a special room rate of \$79.95+tax at the Holiday Inn Holidome, 3006 Caraway Rd, Jonesboro, AR 72401. Make your reservations by calling (870) 935-2030 and ask for the ASU NSSLHA conference rate. This rate includes breakfast.

